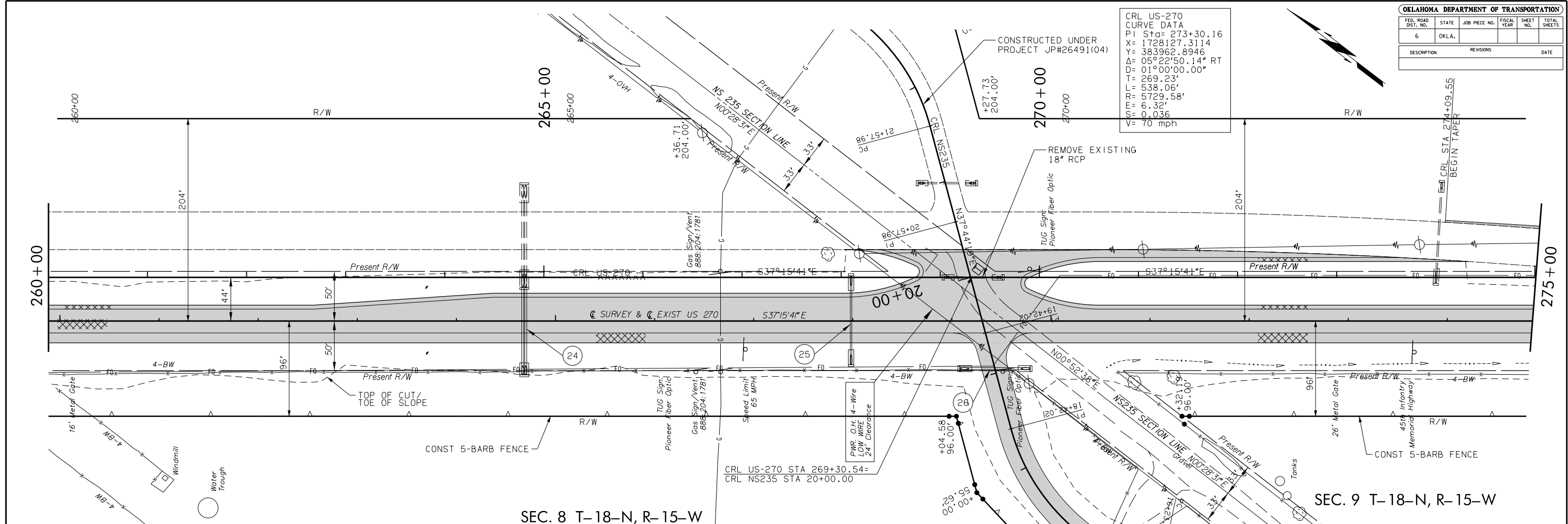
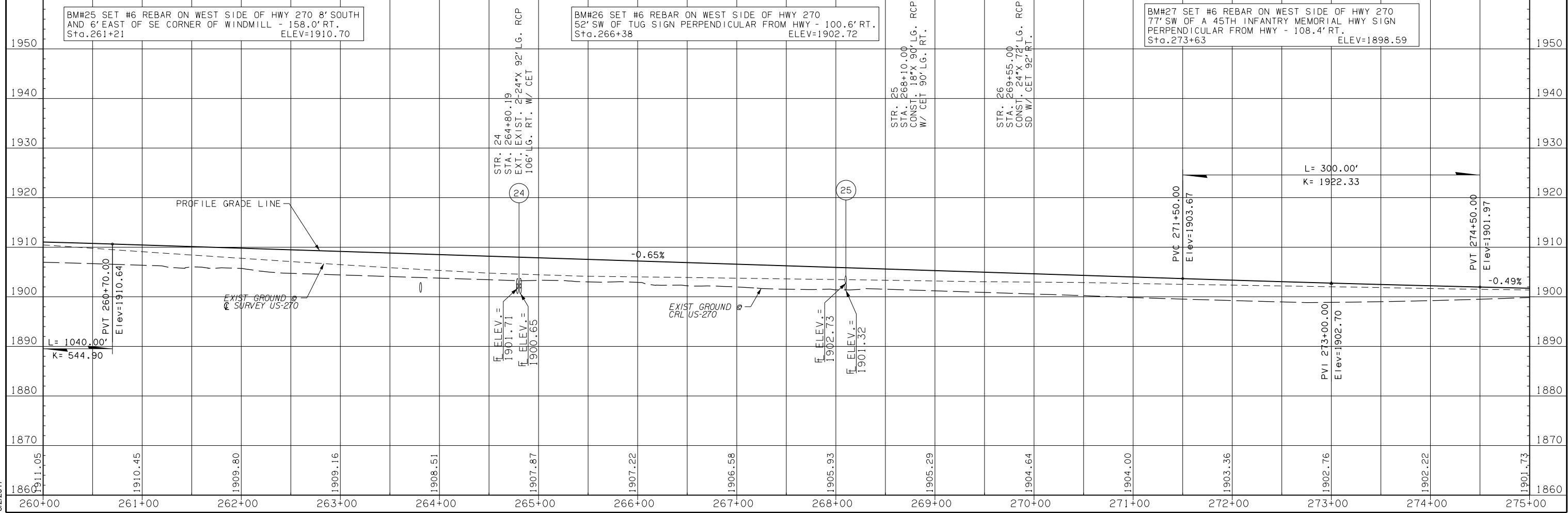


CRL US-270
 CURVE DATA
 PI Sta= 273+30.16
 X= 1728127.3114
 Y= 383962.8946
 Δ= 05°22'50.14" RT
 D= 01°00'00.00"
 T= 269.23'
 L= 538.06'
 R= 5729.58'
 S= 0.322'
 e= 0.036
 V= 70 mph



SEC. 8 T-18-N, R-15-W

SEC. 9 T-18-N, R-15-W



BM#25 SET #6 REBAR ON WEST SIDE OF HWY 270 8' SOUTH AND 6' EAST OF SE CORNER OF WINDMILL - 158.0' RT. Sta. 261+21 ELEV=1910.70

STR. 24 STA. 264+80.19 EXT. EXIST. 2'24" X 92' LG. RCP 106' LG. RT. W/ CET

BM#26 SET #6 REBAR ON WEST SIDE OF HWY 270 52' SW OF TUG SIGN PERPENDICULAR FROM HWY - 100.6' RT. Sta. 266+38 ELEV=1902.72

STR. 25 STA. 268+10.00 CONST. 18" X 90' LG. RCP W/ CET 90' LG. RT.

STR. 26 STA. 269+55.00 CONST. 24" X 72' LG. RCP SD W/ CET 92' RT.

BM#27 SET #6 REBAR ON WEST SIDE OF HWY 270 77' SW OF A 45TH INFANTRY MEMORIAL HWY SIGN PERPENDICULAR FROM HWY - 108.4' RT. Sta. 273+63 ELEV=1898.59

8/2/2017